

MADE IN AUSTRALIA



**TEREX | FRANNA**



AT-20

**BRISBANE**  
585 Curtin Avenue East  
Eagle Farm  
Brisbane Qld 4009  
AUSTRALIA

Ph: +61 7 3868 9600  
Fax: +61 7 3268 2489

**SYDNEY**  
114 Hassall Street  
Wetherill Park NSW 2164  
AUSTRALIA

Ph: +61 2 8786 4444  
Fax: +61 2 8786 4455

**PERTH**  
93 Poole Street  
Welshpool WA 6106  
AUSTRALIA

Ph: +61 8 9358 9806  
Fax: +61 8 9358 9851

Email: [info@terex.com.au](mailto:info@terex.com.au) • Web: [www.terex.com.au](http://www.terex.com.au)



**TEREX | FRANNA**

ACN 010 671 048 ABN 86 010 671 048

MADE IN AUSTRALIA

AT-20

AT-20

Quality System  
Quality  
Endorsed  
Company  
ISO 9001:2001  
QEC 10610  
SAI-GLOBAL



The FRANNA AT-20 pick & carrying corporates many new features which enhance safety, driver ergonomics and improved machine operations. Built for comfort as well as hard work the cabin offers a spacious interior, a binnacle type dashboard, pilot operated hydraulics and a digital load indicator. Both the hydraulic oil and fuel tank have been integrated around the 6 cylinder turbo charged and intercooled engine in the rear body, with the latest design in adjustable wear pads and boom structure up front. With this machine you have the power, finesse and versatility to lift almost anything anywhere.

**Here are some of the many features:**

- Mercedes 205Kw turbo charged & intercooled diesel engine.
- Allison 6 Speed automatic transmisson.
- Hydraulic winch 2 speed with full hook compensation.
- Synchronized power boom 4 part hook block.
- Winch line pull with full drum 4.2 tonne & 2 speed winch
- 40° articulation each side of centre providing a total of 80° of slewing arc.
- Exclusive park brake attachment allows the operator to slew the Crane through 80° whilst the crane is stationary and the parking brake is activated.
- 32 mm thick steel front plate, with fully recessed dual headlights and blinkers.
- Boom head design for maximum clearance for machinery installation.
- 800 litre front mounted sling and tackle compartment with opening front and top doors for easy access.
- Wide stance boom lift cylinders provide maximum operator's vision.
- Total engine cover hinged rearwards for maximum access to engine and service points.
- Front bonnet cover hinged to allow full access to main hydraulics, pilot hydraulics and service points.
- Upswept exhaust/chrome muffler for minimum noise levels.
- Large zone tinted front windscreen.
- Roof, rear and quarter glass windows are tinted and allow greater visibility.
- Full binnacle type instrumentation and controls positioned for ease of operation.
- 3B6 Load moment indicator with audio/visual overload pre-warning.
- 2 speed windscreen wipers, washer and heater/demister.
- KAB suspension driver's and passenger seats, including retracting seat belts.
- Full power orbital steering/DC emergency steering.
- Heavy-duty front and rear bodies with fully incorporated checker plate mudguards.
- Work lights front and rear, amber rotating light to rear bonnet.
- Cruise control

# FRANNA AT-20 CRANE SPECIFICATIONS

**RATED CAPACITY:**

20 Tonne at 1.4m Radius  
 1.60 Tonne at 15.8m Radius  
 Max Hook Height 17m  
 Fall Block (4 parts) capacity  
 16.8 Tonne  
 Single Line 4.2 Tonne

**TRANSMISSION:**

Allison MD 3060  
 6 Speed fully automatic electronically controlled with lockup available in 2nd to 6th for fuel economy.  
 2 stage engine exhaust brake.

**TYRES/RIMS:**

12.00 x 20 x 18 PR Bias Ply Duals.  
 20" x 8.5" Heavy Duty ISO 10 stud 335 PCD Spigot Mount Rims.

**AXLE LOADINGS:**

Front Axle 8000 kg  
 Rear Axle 11 500 kg  
 TOTAL 9 500 kg

**TRANSFER CASE:**

Styer VG 750 2:1 ratio  
 Two speed airshift for High and Low Range.  
 2WD/4WD via airshift disconnect to rear axle.

**SUSPENSION:**

Two (2) Semi elliptic springs on front & rear axle plus TORSION BAR on front axle for stability.

**TURNING CIRCLE:**

Outside Wheels 7.4 metres

**DIMENSIONS:**

Overall Length 9.670 metres  
 Overall Width 2.500 metres  
 Overall Height 3.07 metres

**PERFORMANCE:**

Maximum - 85 km/h  
 Gradability - 50 %  
**ENGINE:**  
 Mercedes OM906LA inline 6 Cylinder Turbo Charged and intercooled & turbo timer 205 kW (275 HP) at 2800 rpm  
 1100 Nm (811 ft.lbf) at 1000 rpm.  
 Onhighway Euro 3 compliant

**DRIVE AXLES:**

Kessler D71 PL478  
 Heavy Duty High Speed Planetary Axles. Front axle fitted with driver selectable diff lock.

**BRAKES:**

Air operated high capacity Large Wedge style twin Circuit Service and Spring Applied Park Brakes on both front & rear axles. Crane operation hold brake on driver's side front wheel. Driver selectable engine exhaust brake is available in all gears - automatically selects converter lockup.

**CABIN:**

Two man, insulated lock up cabin. 3B6 LMI (load movement indicator) with over load cutouts, Driver & passenger suspension seats & airconditioned. Radio cassette, Centralised Greasing system, Cruise control, Engine monitoring & service diagnostics.

**STEERING:**

Full Power ORBITROL with twin Hydraulic double acting rams. Priority flow from main pump supply plus electro hydraulic emergency supply.

**HYDRAULIC PUMP:**

Load sensing axial piston Max pump Flow rate 126 Litre/min. Maximum working pressure 250 Bar.

**BOOM & HYDRAULIC WINCH:**

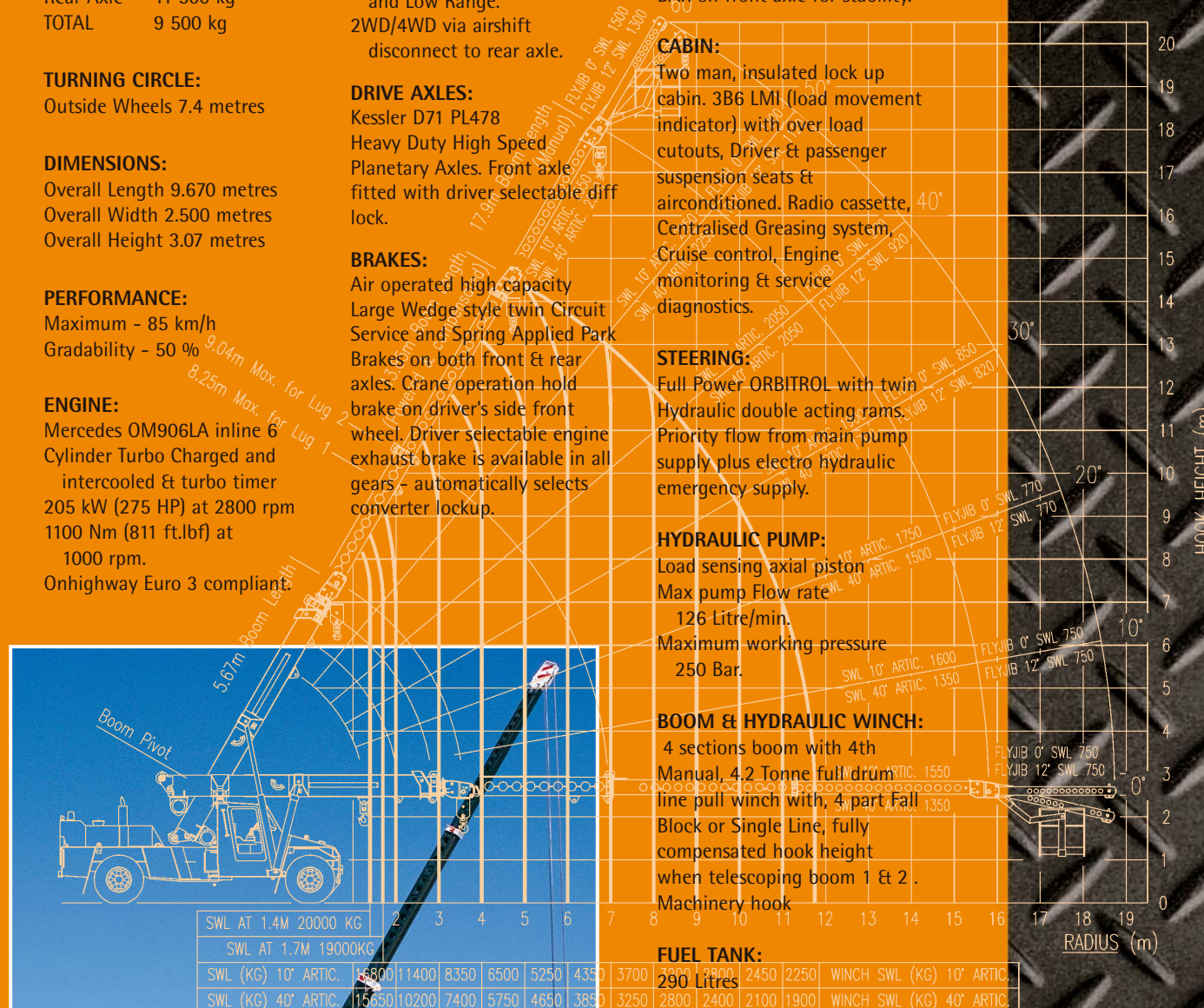
4 sections boom with 4th Manual, 4.2 Tonne full drum line pull winch with, 4 part Fall Block or Single Line, fully compensated hook height when telescoping boom 1 & 2. Machinery hook

**FUEL TANK:**

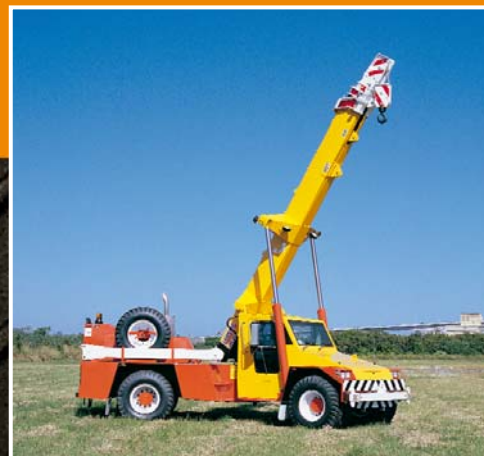
290 Litres

**HYDRAULIC TANK:**

255 Litres with top mounted return and in tank suction filters.



NOTE : 1. SWL'S AT 1.4 & 1.7M RADIUS ARE FOR LUGS ONLY. OTHER SWL'S CHECK LOADCHART FOR LUG VALUES.  
 2. THIS RADIUS CHART IS A SUMMARY OF LOADCHART 16C1320-. REF TO THE CRANE'S LOADCHART BEFORE ATTEMPTING A LIFT.



# AT-20